



UNCOMPAHGRE WILDERNESS

Grand Mesa, Uncompahgre, & Gunnison National Forests

Straley 03/14/11

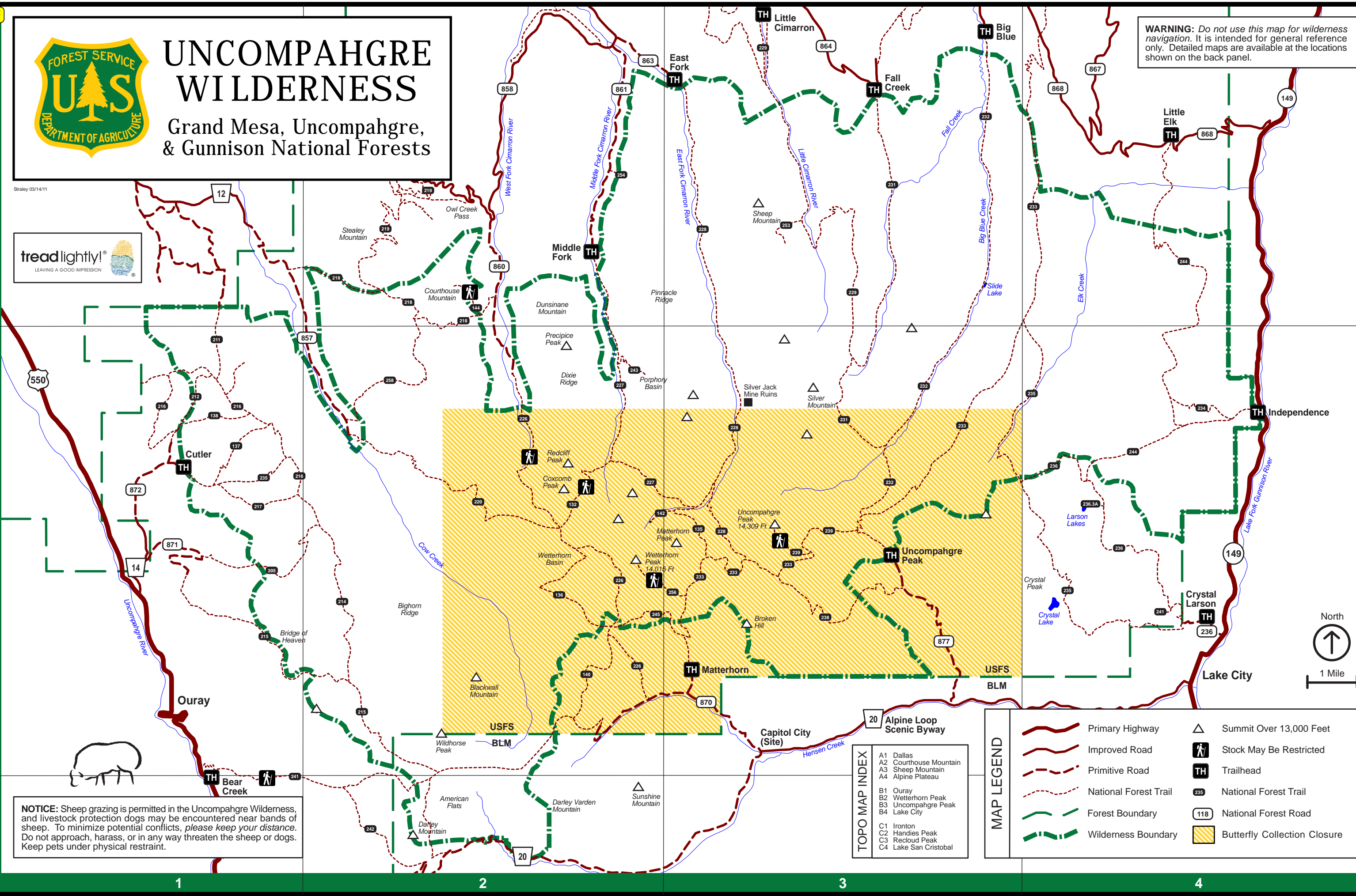


WARNING: Do not use this map for wilderness navigation. It is intended for general reference only. Detailed maps are available at the locations shown on the back panel.

A

B

C



NOTICE: Sheep grazing is permitted in the Uncompahgre Wilderness, and livestock protection dogs may be encountered near bands of sheep. To minimize potential conflicts, please keep your distance. Do not approach, harass, or in any way threaten the sheep or dogs. Keep pets under physical restraint.



TOPO MAP INDEX

A1	Dallas
A2	Courthouse Mountain
A3	Sheep Mountain
A4	Alpine Plateau
B1	Ouray
B2	Wetterhorn Peak
B3	Uncompahgre Peak
B4	Lake City
C1	Ironton
C2	Handies Peak
C3	Recloud Peak
C4	Lake San Cristobal

MAP LEGEND

	Primary Highway		Summit Over 13,000 Feet
	Improved Road		Stock May Be Restricted
	Primitive Road		Trailhead
	National Forest Trail		National Forest Trail
	Forest Boundary		National Forest Road
	Wilderness Boundary		Butterfly Collection Closure

1

2

3

4

Welcome To The Wild

Uncompahgre Wilderness

Location
Southwestern Colorado
Ouray, Gunnison, & Hinsdale Counties

Access
10 Trailheads
110 Miles of Designated Trail

Season
Late June to Mid September
Passes May Remain Snowbound

Weather
30-80 Degrees (F)
Frequent Rain, Occasional Snow

Use
Moderate to High
High on Weekends & Holidays

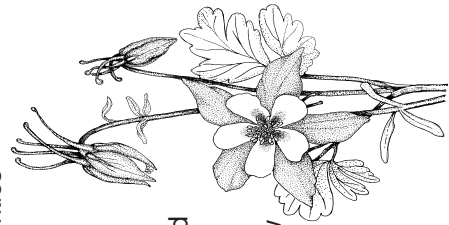
Difficulty
Moderate to Severe
Rugged Terrain, High Altitude

Restrictions
Special Restrictions Apply
See Below for More Information

The Uncompahgre Wilderness is located in the spectacular San Juan Mountains of southwestern Colorado. It boasts two of Colorado's famed "fourteeners" and many other peaks over 13,000 feet. This is a landscape defined by towering rock, expansive alpine tundra, and forested canyons. Originally known as the Big Blue Wilderness, it was added to the National Wilderness Preservation System by Congress in 1980 and expanded in 1993 to include adjacent land administered by the Bureau of Land Management. The Uncompahgre Wilderness now totals 102,721 acres.

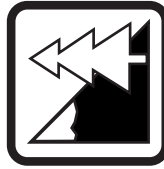
The San Juan Mountains were born of fire and shaped by ice. The origins of the San Juans lie in an immense dome formed by tectonic activity during the Laramide Orogeny about 65 million years ago. About 35 million years ago, the dome cracked and bulged as it yielded to tremendous pressure from the magma below. After millions of years of volcanic fury, the San Juans were covered in massive glaciers that carved the rugged landscape seen today.

The San Juans are highly mineralized and were at the heart of Colorado's silver and gold mining history. Many relics of the past can still be seen in these mountains, adding a unique human dimension to the wilderness experience.

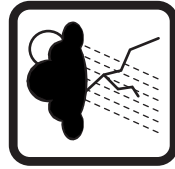


Wilderness Wise

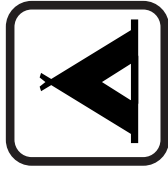
Know Before You Go



This area was designated as "wilderness" by Congress to provide you and future generations with the benefits of an enduring primitive resource that is unimpaired by human civilization.



Expect to encounter the challenges and inherent risks of mountain weather, wild and rugged terrain, wildlife, and other natural hazards. *Your safety is your responsibility.* Be prepared!

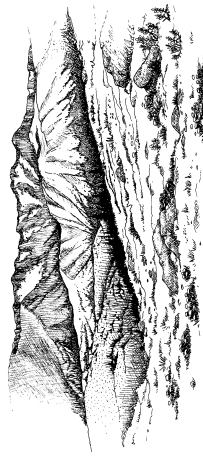


Please help protect this special area by practicing *Leave No Trace* outdoor ethics and respecting all *Restrictions*. Thank you for your cooperation, and have a safe and enjoyable visit!

What Is Wilderness?

Many Lasting Things

Wilderness areas are designated by Congress to protect places with rare primeval character from an expanding human civilization. They are managed to preserve their "wildness" and to provide opportunities for primitive recreation and solitude. Wilderness is an American legacy.



Wilderness offers sanctuary for wildlife, protects watersheds, and is a living link to our natural heritage. It preserves a piece of a lost landscape and possesses ecological, cultural, scientific, educational, recreational, and/or spiritual values.

Wilderness Is

America's Enduring Resource

RESTRICTIONS

Uncompahgre Wilderness

To protect wildness and the experiences of others, the following acts are **PROHIBITED** within the Uncompahgre Wilderness:

- Ⓜ Camping within 100 feet of a water source or designated trail. Over 200 feet is preferred.
- Ⓜ Building a campfire within 100 feet of a water source or designated trail or above treeline.
- Ⓜ Restraining a saddle or pack animal within 100 feet of a water source or designated trail or in violation of posted instructions. Animals must not be permitted to damage trees, soil, or vegetation.
- Ⓜ Groups exceeding 15 persons and/or 25 heartbeats, including pack and saddle stock. Larger groups must separate into smaller groups and remain at least one mile apart at all times.
- Ⓜ Failing to properly dispose of all garbage (pack it out) and leaving human waste in an exposed or unsanitary manner.
- Ⓜ Shortcutting a switchback in a trail.
- Ⓜ Collecting or harming butterflies in any stage of their life cycle from June 1 to August 30.
- Ⓜ Damaging any natural feature. This includes, but is not limited to: falling or damaging trees, trenching, and vandalism.
- Ⓜ Building any structure or improvement. This includes, but is not limited to: hitchrails, camp furniture, and shelters.
- Ⓜ Mechanized transportation or motorized equipment. This includes, but is not limited to: motor vehicles, bicycles, carts, and chainsaws.

NOTICE
Violations are punishable by a maximum fine of \$5,000 and/or six months imprisonment. (Title 16 USC 551).
Other restrictions may apply.
For more information, contact the Ouray Ranger District:
970-240-5300.

Please Keep It Wild
RESPECT RESTRICTIONS

LEAVE NO TRACE

Outdoor Ethics

PLAN AHEAD & PREPARE

"Know before you go!" Learn everything you can about the area you plan to visit and the regulations for its use.

TRAVEL & CAMP ON DURABLE SURFACES

Use established campsites and trails, where available. Avoid sites just beginning to show impacts. Keep campsites small and at least 200 feet from water, designated trails, and occupied campsites.



DISPOSE OF WASTE PROPERLY

"Pack it in, pack it out!" Bury human waste in a cathole 6-8 inches deep and at least 200 feet from water. Wash yourself and your dishes at least 200 feet from water.

LEAVE WHAT YOU FIND

Do not damage, deface, or remove natural objects or cultural artifacts. Leave them for others to enjoy. Don't build structures, dig trenches, or alter natural features.

MINIMIZE USE & IMPACTS OF FIRE

Use a lightweight stove, instead of a fire. If you build a fire, use only small dead wood found on the ground and use existing fire rings.



RESPECT WILDLIFE

Watch wildlife from a distance and never approach, feed, or follow it. Seal food tightly and store it out of reach. Control pets at all times or consider leaving them at home.

BE CONSIDERATE OF OTHER VISITORS

Don't let your fun disturb others. Preserve the natural quiet. When you meet horses on the trail, step off the downhill side and speak softly until they pass.



Please Keep It Wild
PRACTICE LEAVE NO TRACE

UNCOMPAHGRE WILDERNESS

US Department of Agriculture
Grand Mesa, Uncompahgre,
& Gunnison National Forests



"We have a profound, fundamental need for areas of wilderness -- a need that is essential to our understanding of ourselves, our culture, our own natures, and our place in nature."

Howard Zahniser



Ouray Ranger District
2505 S. Townsend Avenue
Montrose, CO 81401
(970) 240-5300

Gunnison Ranger District
216 N. Colorado Street
Gunnison, CO 81230
(970) 641-0471

Forest Supervisor's Office
2250 Highway 50
Delta, CO 81416
(970) 874-6600

BLM Gunnison Field Office
216 N. Colorado Street
Gunnison, CO 81230
(970) 641-0471

Ouray Chamber Visitor Center
PO Box 145
1230 Main Street
Ouray, CO 81427
(970) 325-4746
(800) 228-1876
ouray@ouraycolorado.com



Visit us on the web at: www.fs.fed.us/r2/gmug.
Learn more about wilderness or find more information on this wilderness at: www.wilderness.net.