

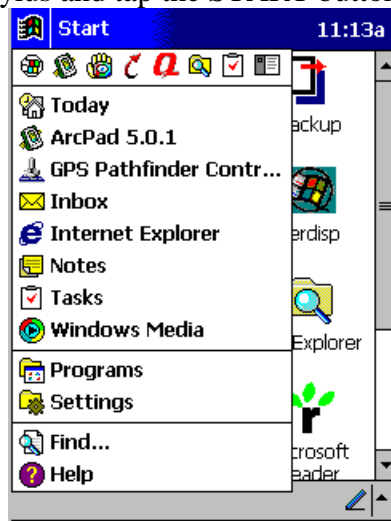


# USING COMPAQ IPAQ AND ARCPAD FOR CAMPSITE INVENTORY




## I. Open ArcPad

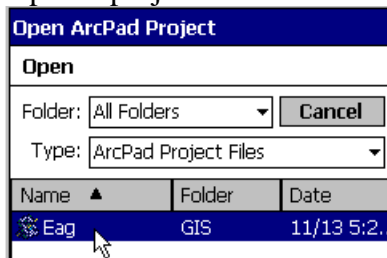
- 1) Press the On/Off button on the iPAQ.
- 2) Remove the stylus and tap the START button in the upper left corner of screen.




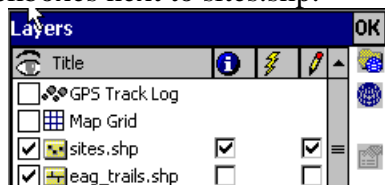
- 3) Tap ArcPad 5.0.1 to launch program.

## II. ArcPad Project Setup (must be completed each time ArcPad is opened)

- 1) Tap Open Project button .
- 2) Tap on the appropriate project file.




- 3) Tap the Layers button .
- 4) Select the checkboxes next to sites.shp.

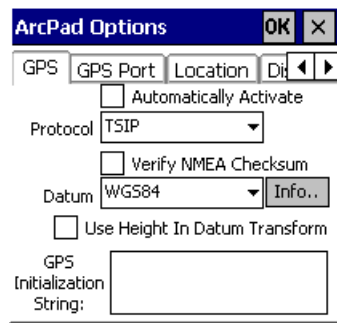


- 5) Tap OK at top of window.

\*\*\*You may have to uncheck these boxes, then recheck them for project to\*\*\*  
\*\*\*function correctly. When the layers are editable, the edit/drawing toolbar\*\*\*  
\*\*\*appears beneath the other two toolbars.\*\*\*




- 6) Tap Tools  button and verify that the Protocol field is set to TSIP and the Datum field is set to WGS84.



### III. Gathering GPS Data

- 1) Tap the arrow to the right of the GPS Status/Position button  and select GPS Active.




\*\*\*When the receiver is activated, red crosshairs should appear on the screen .

\*\*\*Word of caution: the receiver may be activated, but not gathering position data


\*\*\*from the satellites. If this is the case, the crosshairs will be positioned in the last

\*\*\*location that the receiver gathered data. Be sure to check that the position of the

\*\*\*crosshairs on the screen matches your actual position on the ground.

- 2) Stand on the location you wish to mark with the GPS.
- 3) Tap the Capture Point button . This button will not be greyed out as it is here if the GPS has been activated.

### IV. Manually Locating a Campsite

- 1) Tap Draw Point button .
- 2) Tap screen with stylus where you want to locate campsite.

## V. Campsite Inventory Forms

**Feature Properties** ? OK X

1 2 3 4 5

Date: 11/13/01

Crew Name:

Site Code (Ex. xyz123):

Elevation: 0

Tree Species:

Dist. to System Trail: 0

Trail Screening:

Campsite Screening:

Distance to Water: 0

Water Source Type:

Human-Caused Bank Erosion

Type of Use:

**Feature Properties** ? OK X

1 2 3 4 5

Forage:

# Visible Scarred Trees: 0

# Visible Tree Stumps: 0

# Trees w/Exposed: 0

# Visible Fire Scars: 0

Litter Present?

Manure in Camp?

Barren Core Length: 1

Barren Core Width: 0

**Feature Properties** ? OK X

1 2 3 4 5

Campsites w/in 200'?

Durable Surface:

Frissell Condition Class: 0

Recommendations:

Other Comments:

**Feature Properties** ? OK X

1 2 3 4 5

ON-SITE-Start transect in center of site.  
Enter number of woody pieces.

North 20': 0	East 20': 0
North 35': 0	East 35': 0
North 50': 0	East 50': 0
North 100': 0	East 100': 1
South 20': 0	West 20': 0
South 35': 0	West 35': 0
South 50': 0	West 50': 0
South 100': 0	West 100': 0

**Feature Properties** ? OK X

2 3 4 5 6

OFF-SITE-Start transect in center of site.  
Enter number of woody pieces.

North 20': 0	East 20': 1
North 35': 0	East 35': 0
North 50': 0	East 50': 0
North 100': 0	East 100': 0
South 20': 0	West 20': 0
South 35': 0	West 35': 0
South 50': 0	West 50': 0
South 100': 0	West 100': 0

**Feature Properties** ? OK X

3 4 5 6 A

\*1st plot is 5' from center of campsite. Each add'l plot is 10' past the prior plot.

ON-SITE Vegetation Loss  
# plots w/ >50% Total Plots:

North: 0	North: 0
South: 0	South: 0
East: 0	East: 0
West: 0	West: 0

OFF-SITE Vegetation Loss  
# plots w/ >50% veg. Total Plots:

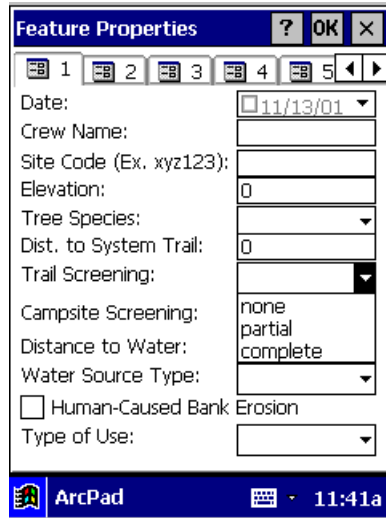
North: 0	North: 0
South: 0	South: 0
East: 0	East: 1
West: 0	West: 0



## VI. Inventory Form Completion

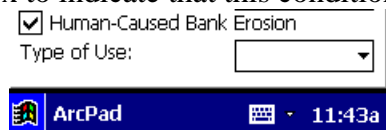
\*\*\*The fields on the campsite inventory form are filled out with three different \*\*\*techniques.



*Forms 1 through 6 must be completed for a full inventory*

- 1) Drop down List Box.
  - a. Simply Tap on the arrow to the right of the field, and choose your selection from the list.




- 2) Text Box.
  - a. Fill these fields by writing letters on the keyboard. The icon in the bottom right corner of the screen accesses the keyboard .
  - b. To close the keyboard, tap the icon again .
- 3) Check Box.
  - a. Tap the box to indicate that this condition exists



- 4) When you are done filling in all applicable pages, Tap the OK icon  at the top of the forms page.
- 5) Move to your next campsite and tap the Capture Point button again .

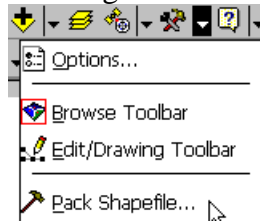
## VII. Saving the Project

- 1) Periodically save the project to ensure that no data is lost.
  - a. Tap the Save Project button .

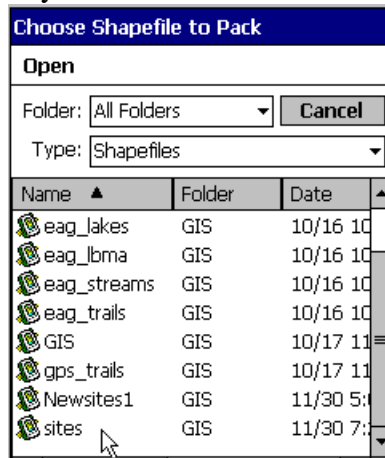
## VIII. Packing the Shapefile

\*\*\*Before ArcPad is shutdown these steps must be followed!!!\*\*\*

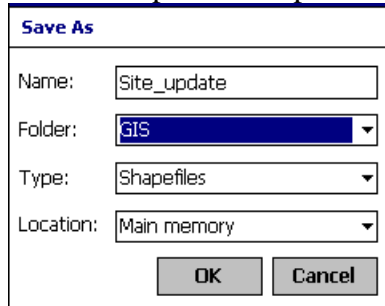
- 1) Tap the arrow to the right of the Tools button  and click on Options.



- 2) Select (tap) the layer that has been edited.

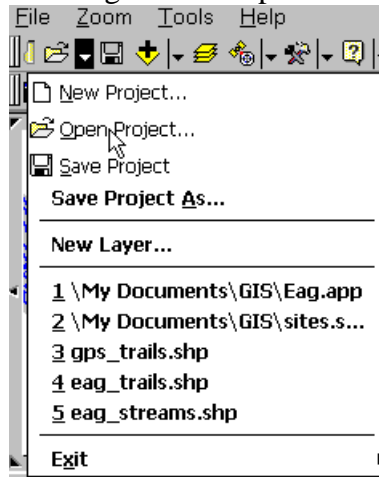


- 3) Enter the filename for the packed shapefile as shown and click OK.



## IX. Exiting ArcPad/iPAQ Shutdown


- 1) Closing ArcPad.
  - a. Tap arrow to the right of the Open File button and choose Exit.



- 2) iPAQ Shutdown.
  - a. Press the ON/OFF button (see page 1).

## X. Miscellaneous


\*\*\*If you mistakenly add a site to the handheld and want to delete:

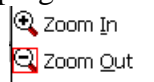
- 1) Tap Pointer .
- 2) Tap the point on the screen that you want to delete. A box should appear around the point.





- 3) Tap the Delete button .

\*\*\*To manipulate the current view on the screen, use the zoom tools

- 1)  Zoom Button.
  - a. By tapping the magnifying glass, you can then select an area to zoom to.
  - b. By tapping the down arrow, you can select Zoom In or Zoom Out.



- 2)  Zoom Undo.
- 3)  Zoom Redo.